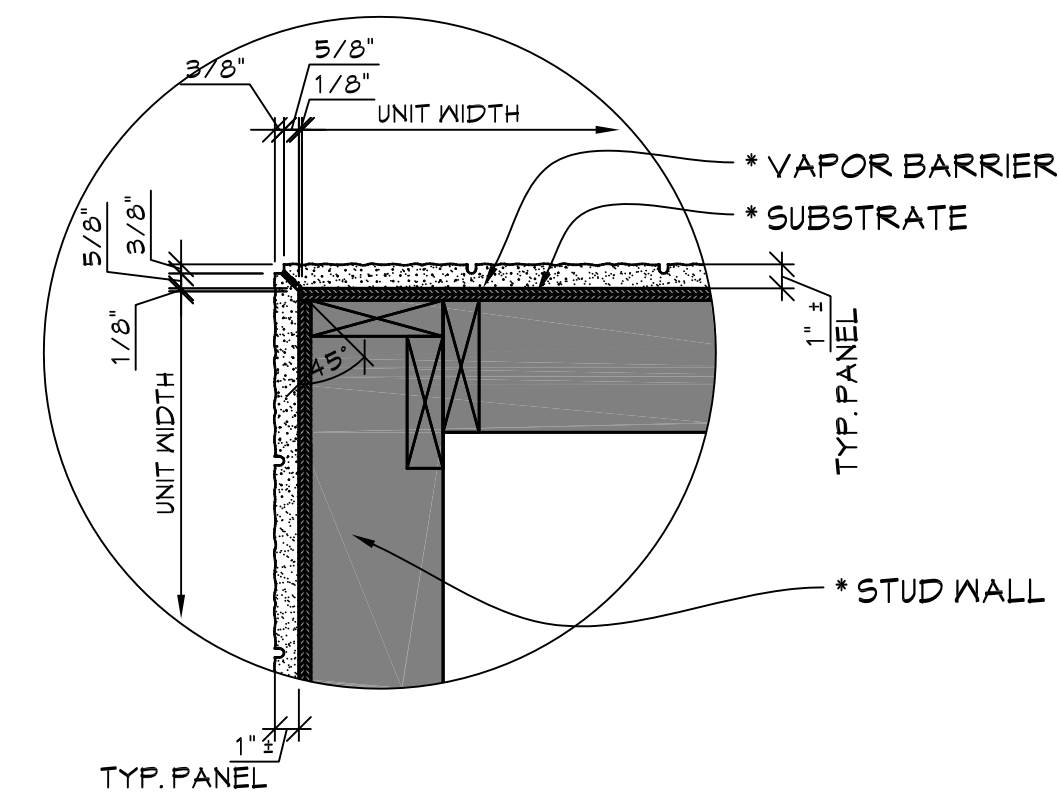
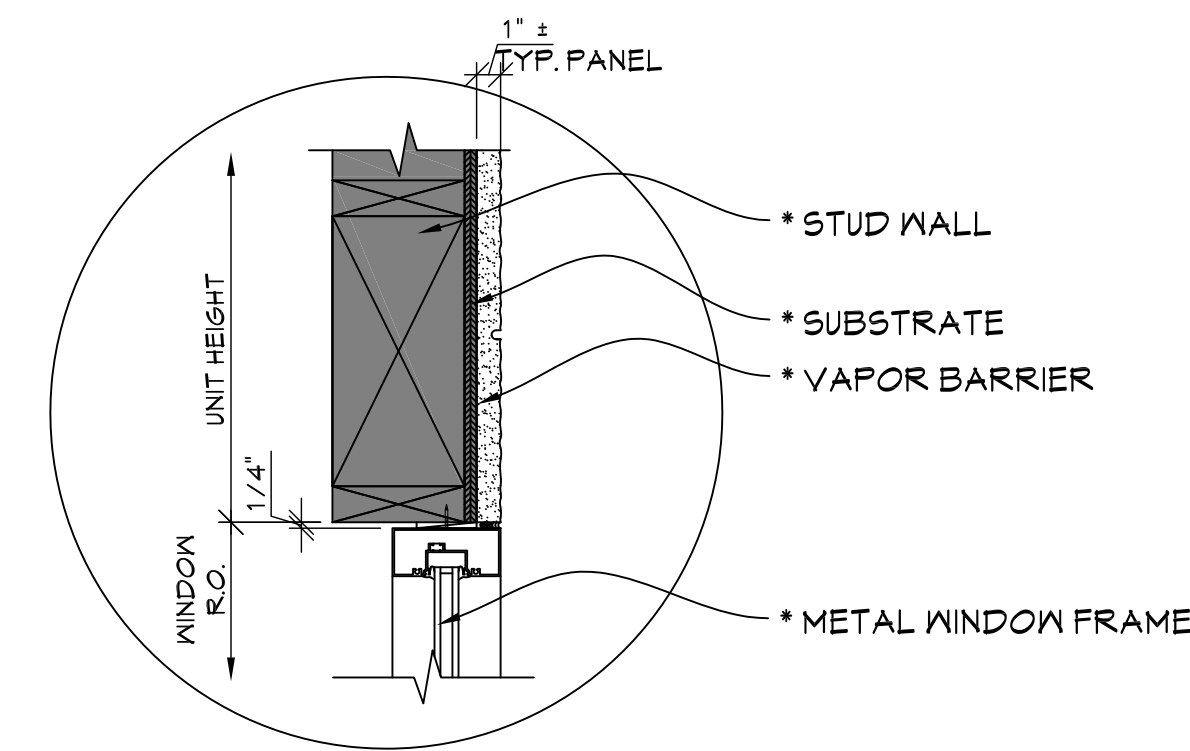


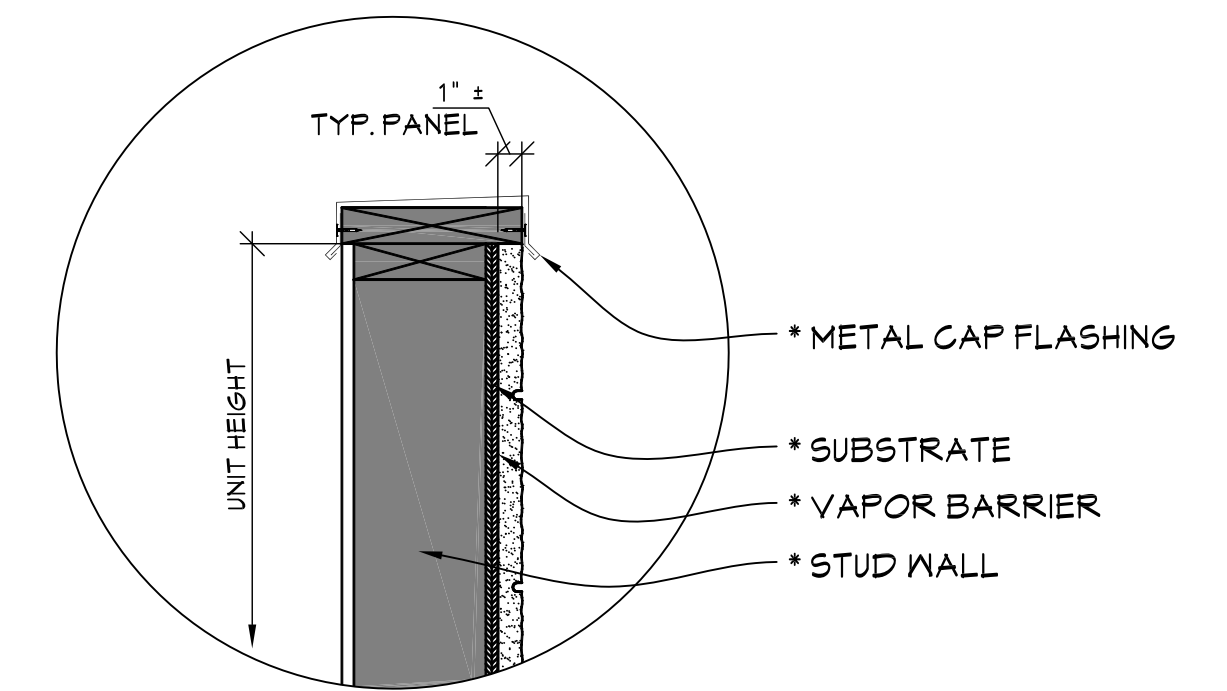
**A VERTICAL JOINT**  
SCALE 1-1/2" = 1'-0"



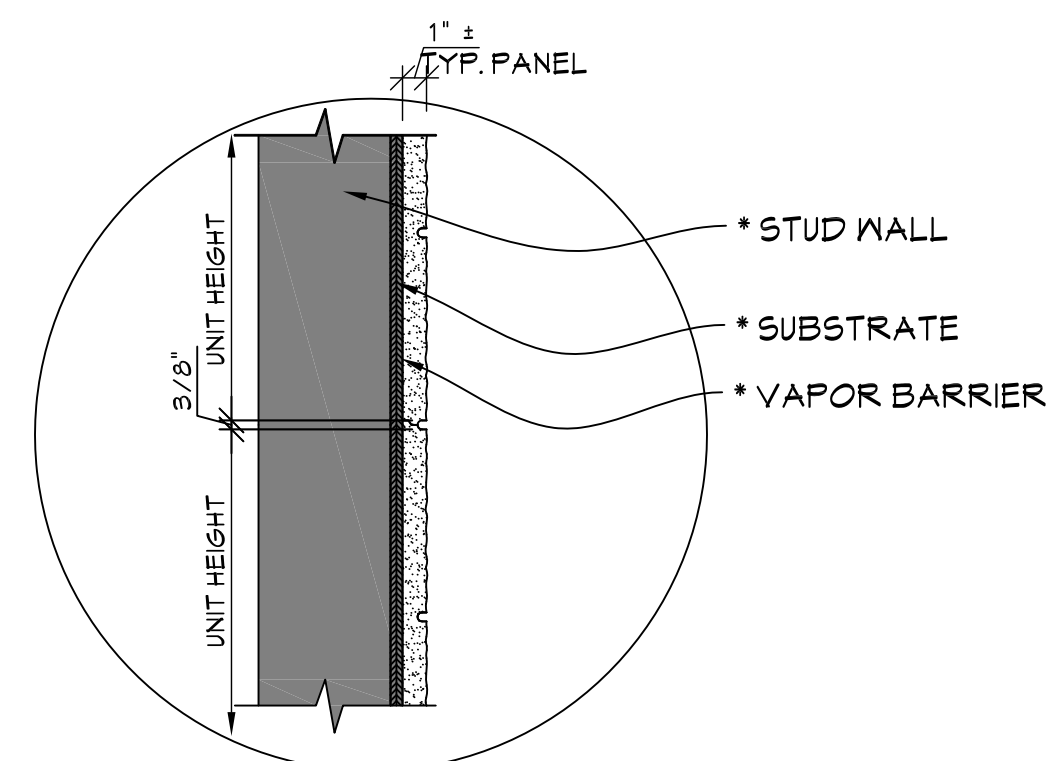
**E OUTSIDE CORNER**  
SCALE 1-1/2" = 1'-0"



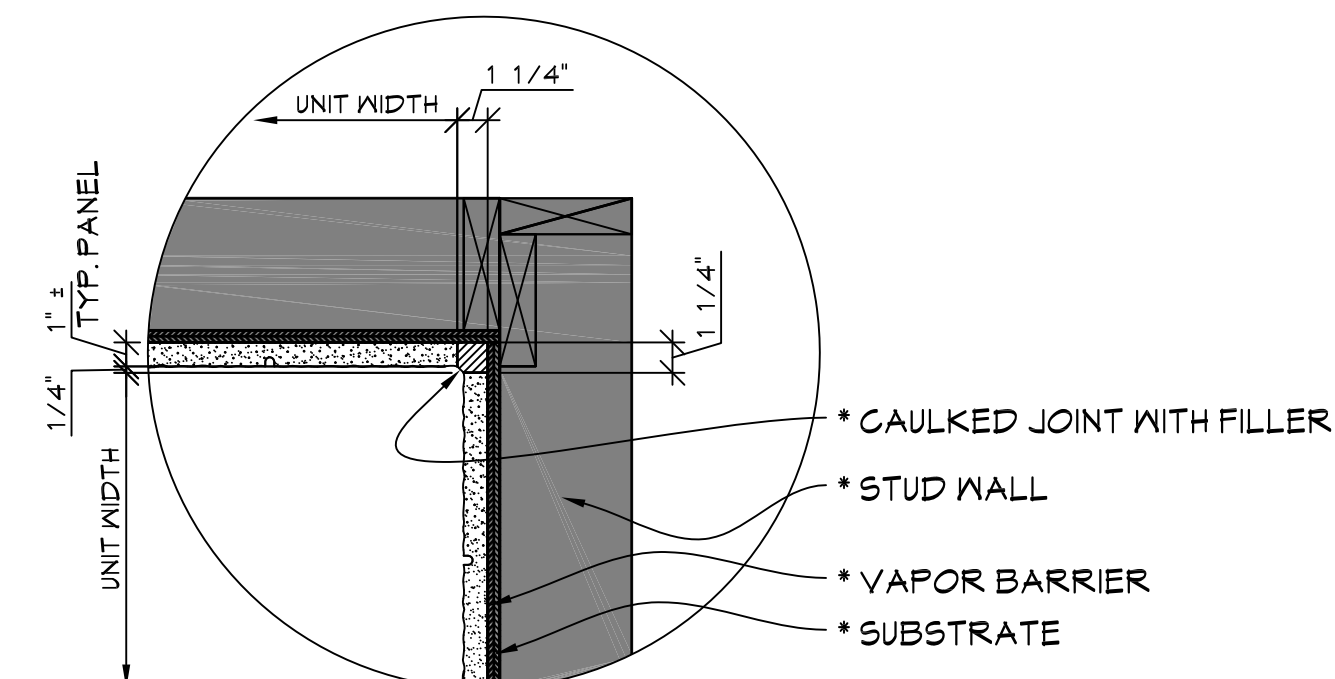
**J WINDOW HEAD**  
SCALE 1-1/2" = 1'-0"



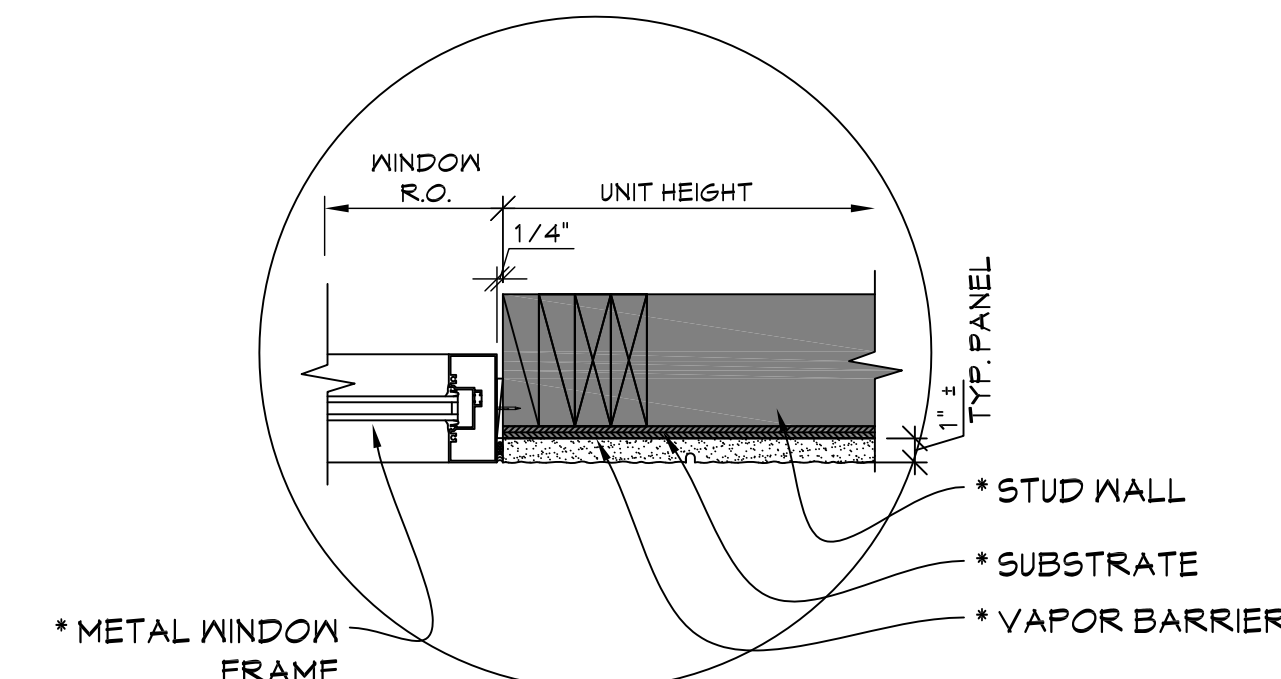
**M PARAPET OF WALL**  
SCALE 1-1/2" = 1'-0"



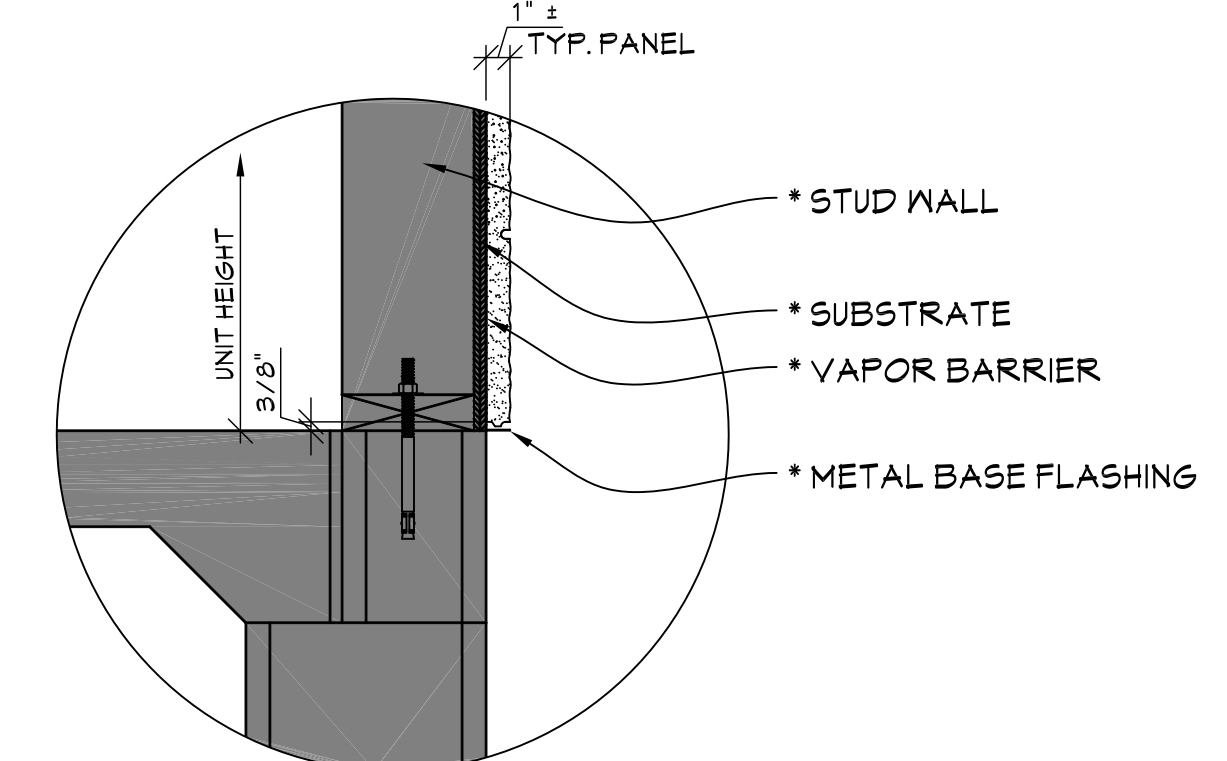
**B HORIZONTAL JOINT**  
SCALE 1-1/2" = 1'-0"



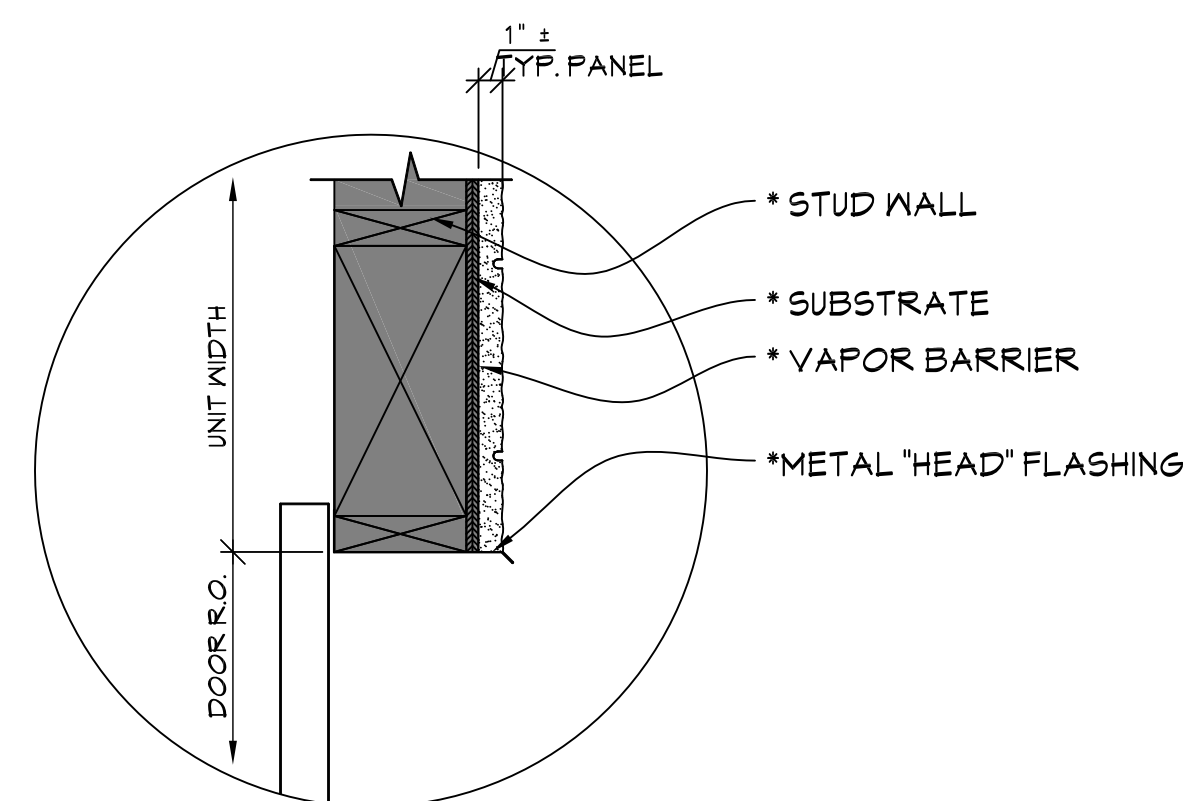
**F INSIDE CORNER**  
SCALE 1-1/2" = 1'-0"



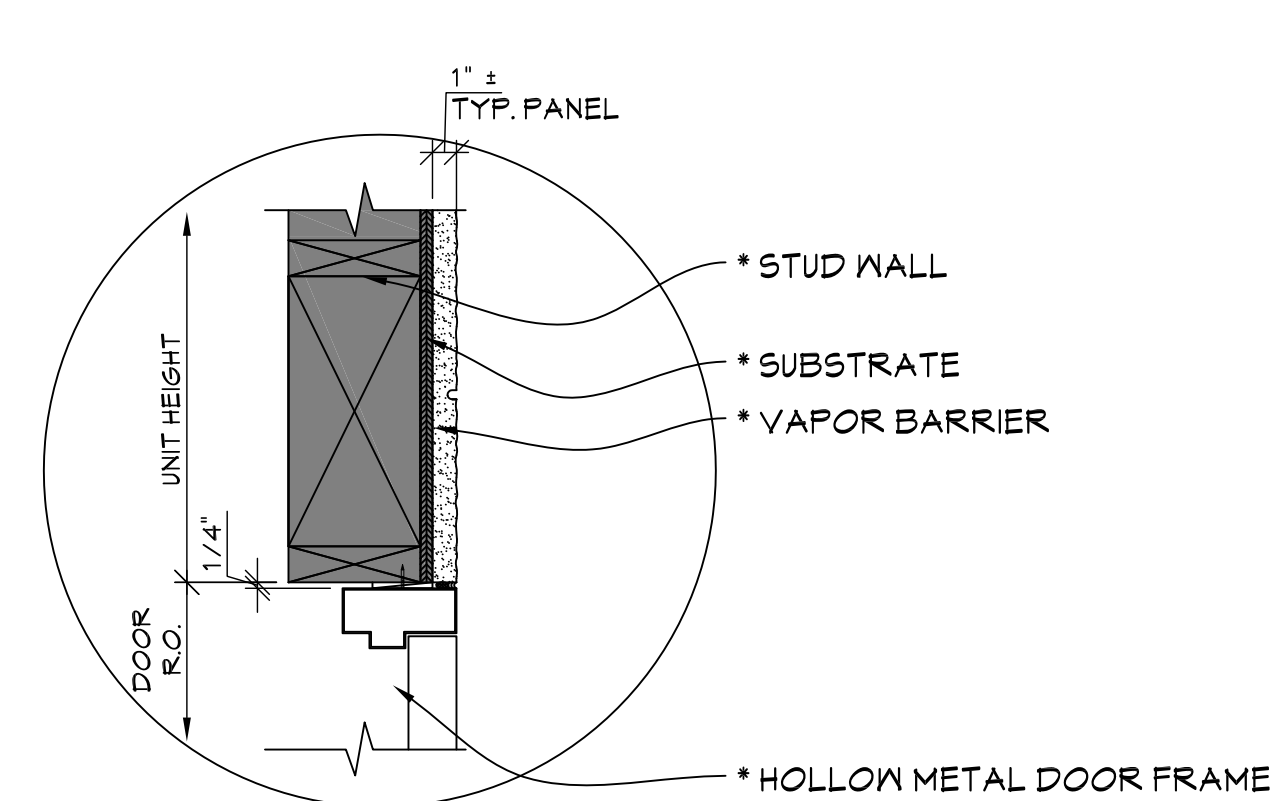
**K WINDOW JAMB**  
SCALE 1-1/2" = 1'-0"



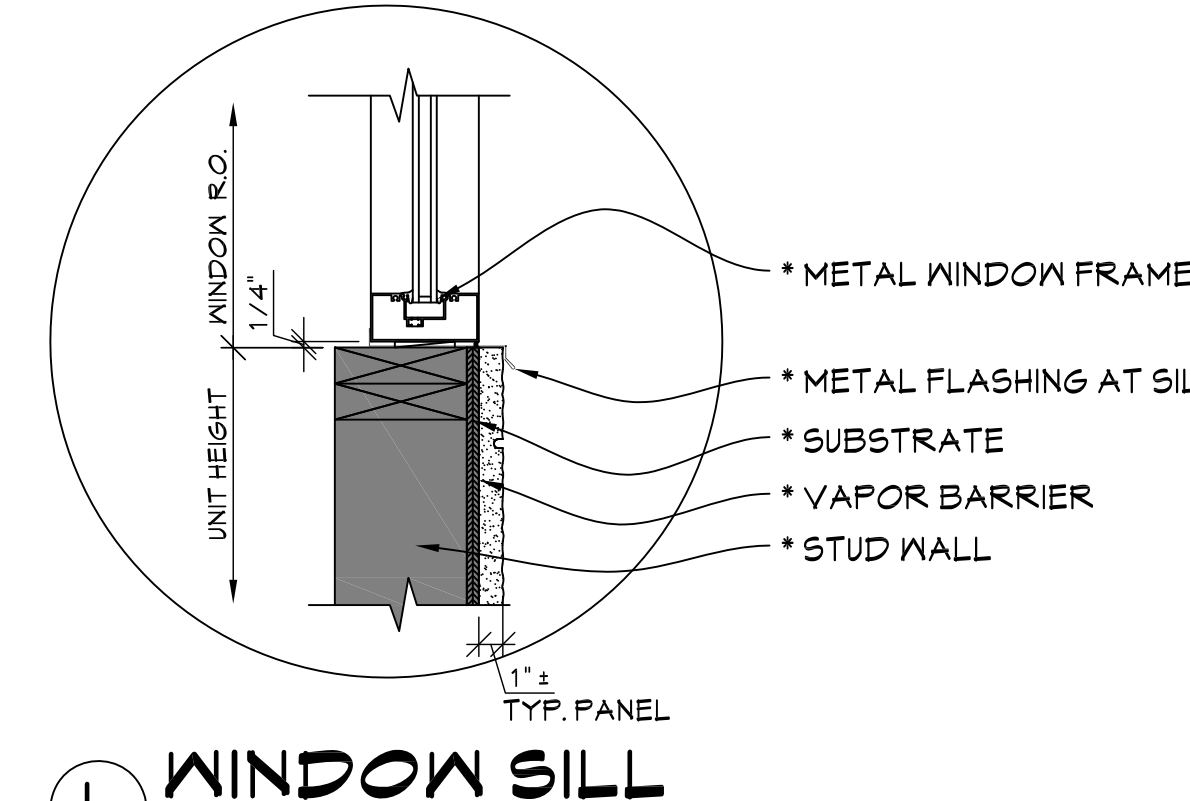
**N BASE OF WALL**  
SCALE 1-1/2" = 1'-0"



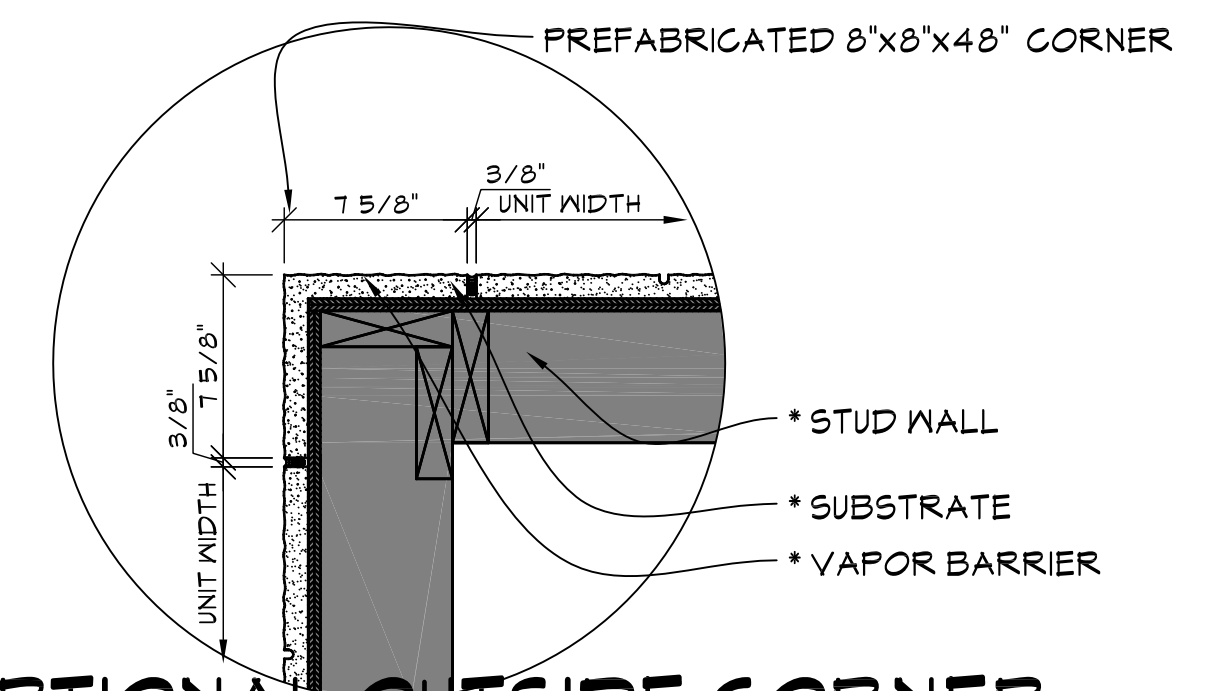
**C OVERHEAD DOOR HEAD**  
SCALE 1-1/2" = 1'-0"



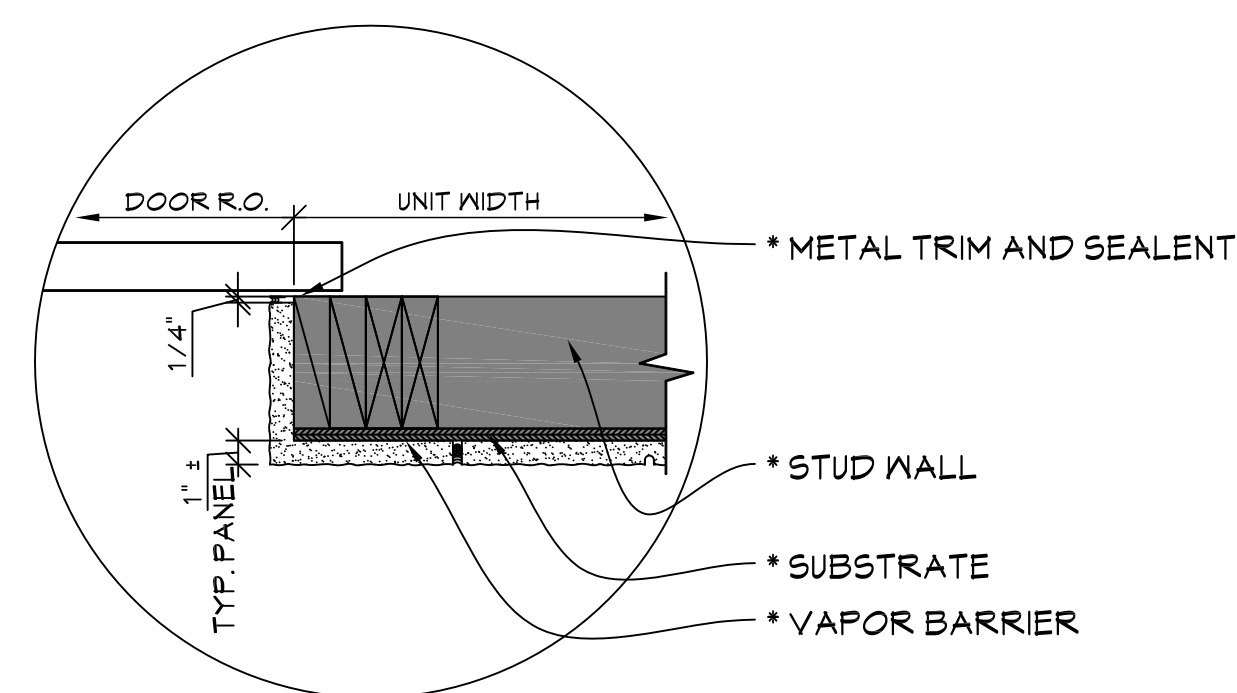
**G HOLLOW METAL DOOR HEAD**  
SCALE 1-1/2" = 1'-0"



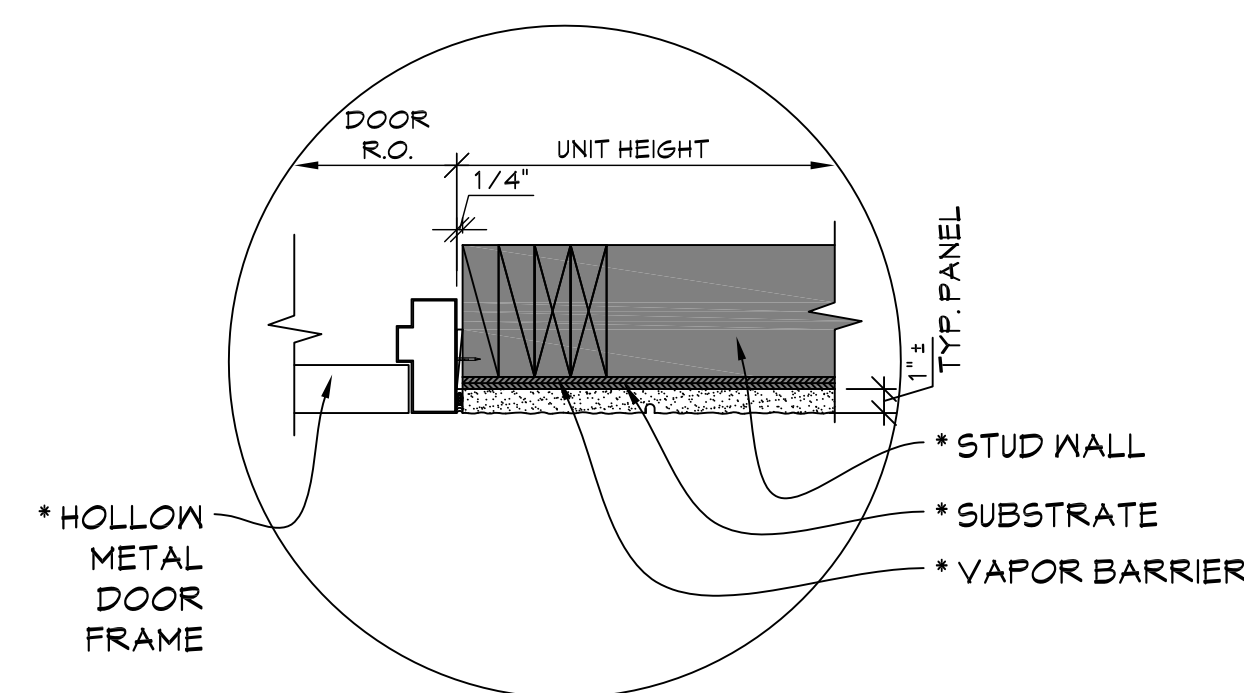
**L WINDOW SILL**  
SCALE 1-1/2" = 1'-0"



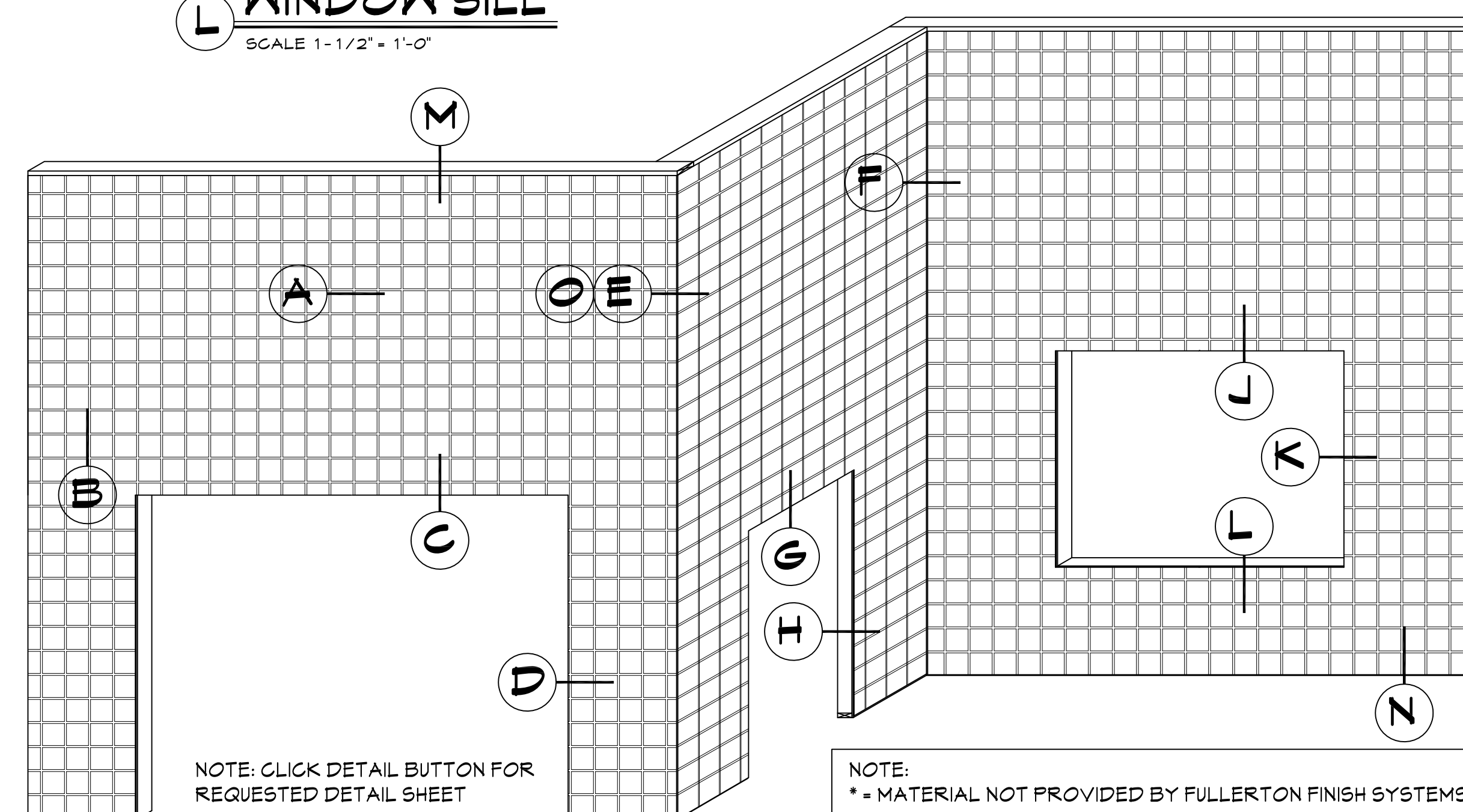
**O OPTIONAL OUTSIDE CORNER**  
SCALE 1-1/2" = 1'-0"



**D OVERHEAD DOOR JAMB**  
SCALE 1-1/2" = 1'-0"



**H HOLLOW METAL DOOR JAMB**  
SCALE 1-1/2" = 1'-0"



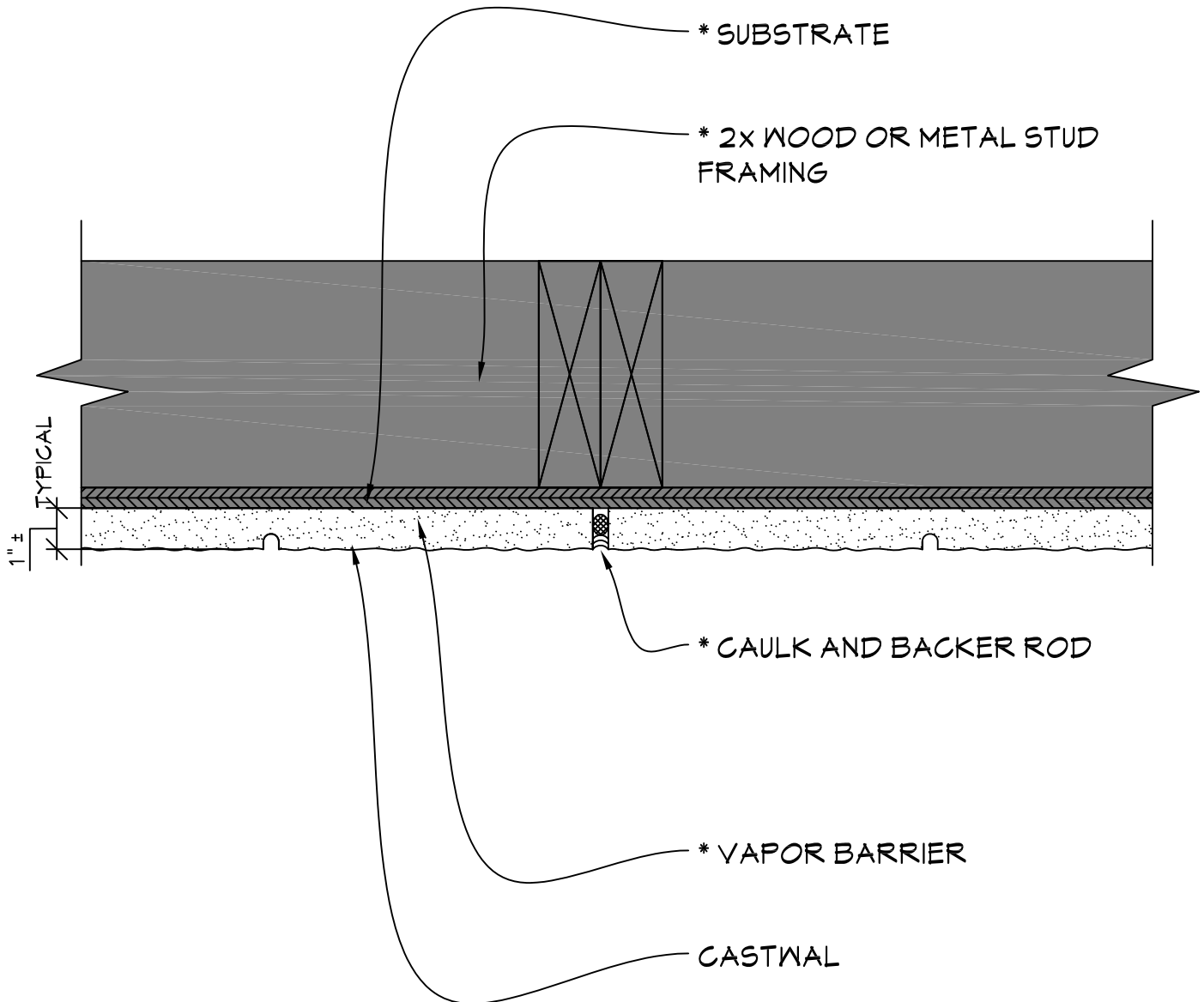
NOTE:  
\* = MATERIAL NOT PROVIDED BY FULLERTON FINISH SYSTEMS

CASTWAL

**FFS**  
FULLERTON  
FINISH SYSTEMS

8645 W. 21st. Street P.O. Box 609  
Sand Springs, OK. 74063  
PH (918) 246-9995

# CASTWAL



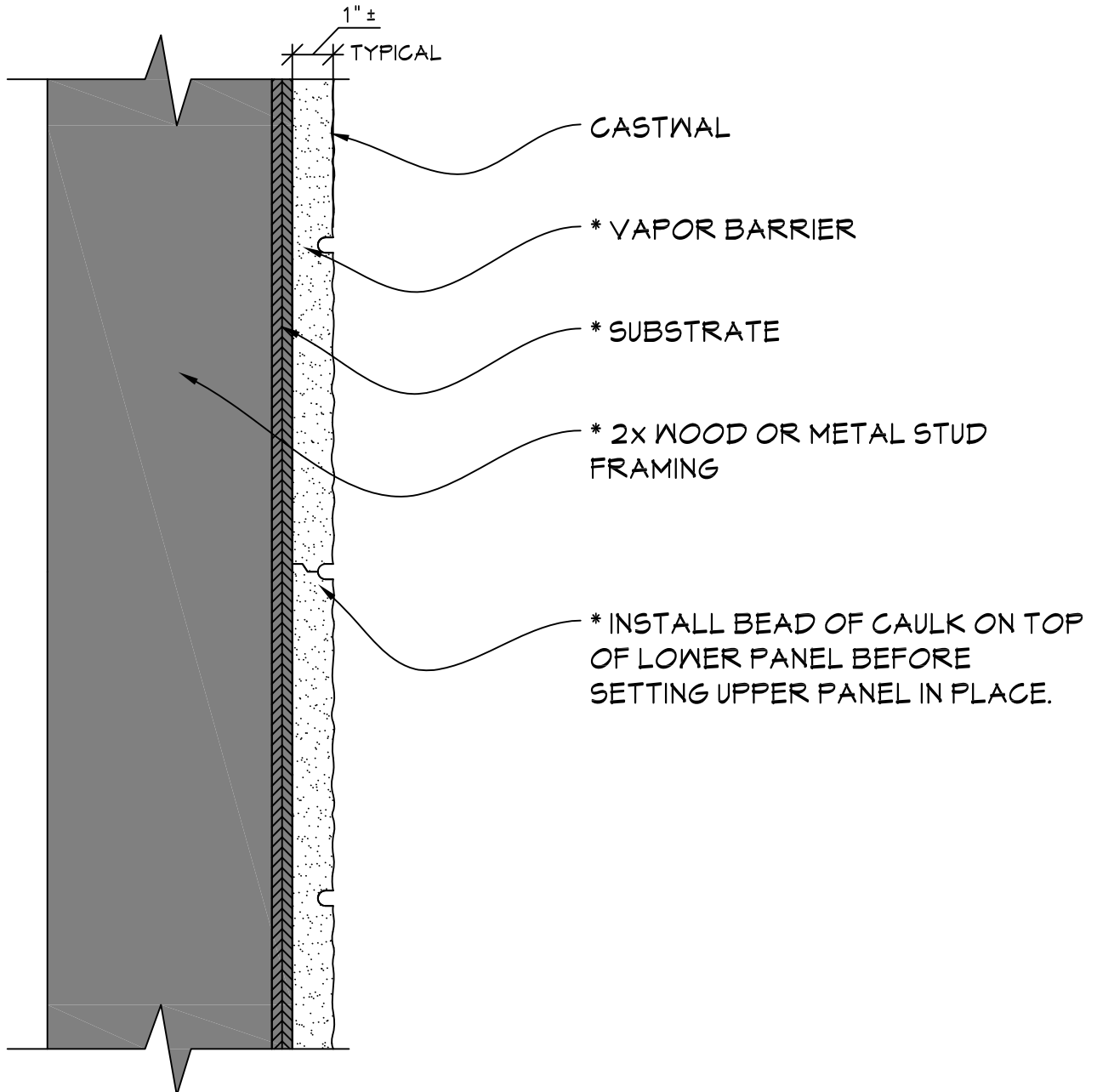
## TYPICAL VERTICAL DETAIL

SCALE: 3" = 1'-0"

NOTE:

\* = MATERIAL NOT PROVIDED BY FULLERTON FINISH SYSTEMS

# CASTWAL



**B** **TYPICAL HORIZONTAL DETAIL**  
 SCALE: 3" = 1'-0"

NOTE:  
 \* = MATERIAL NOT PROVIDED BY FULLERTON FINISH SYSTEMS

# FFS

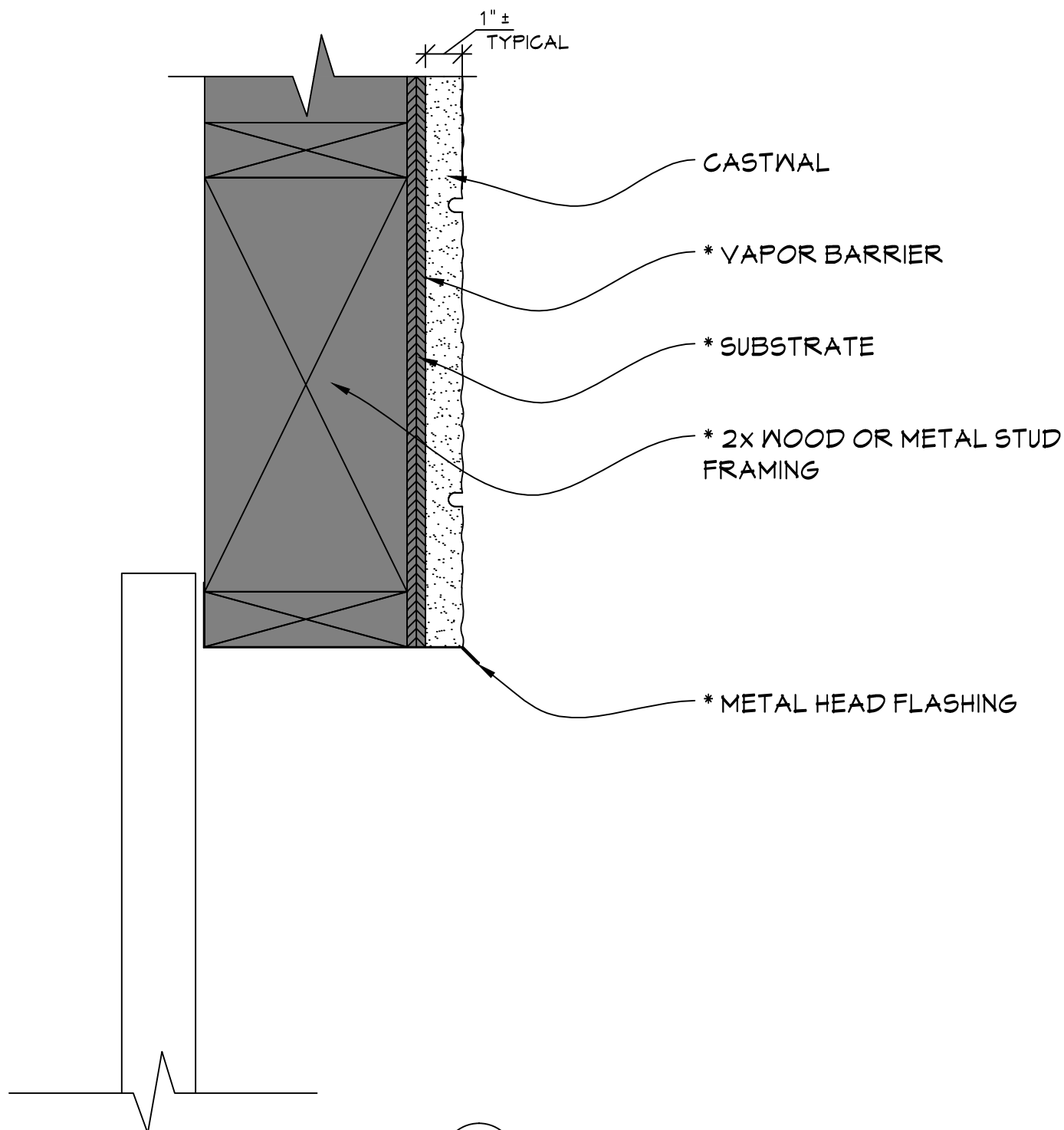
## FULLERTON

FINISH SYSTEMS

8645 W. 21st. Street P.O. Box 609  
Sand Springs, OK. 74063  
PH (918) 246-9995

CLICK FFS LOGO TO RETURN TO MAIN PAGE

# CASTWAL



### TYPICAL OVERHEAD DOOR DETAIL

SCALE: 3" = 1'-0"

NOTE:

\* = MATERIAL NOT PROVIDED BY FULLERTON FINISH SYSTEMS

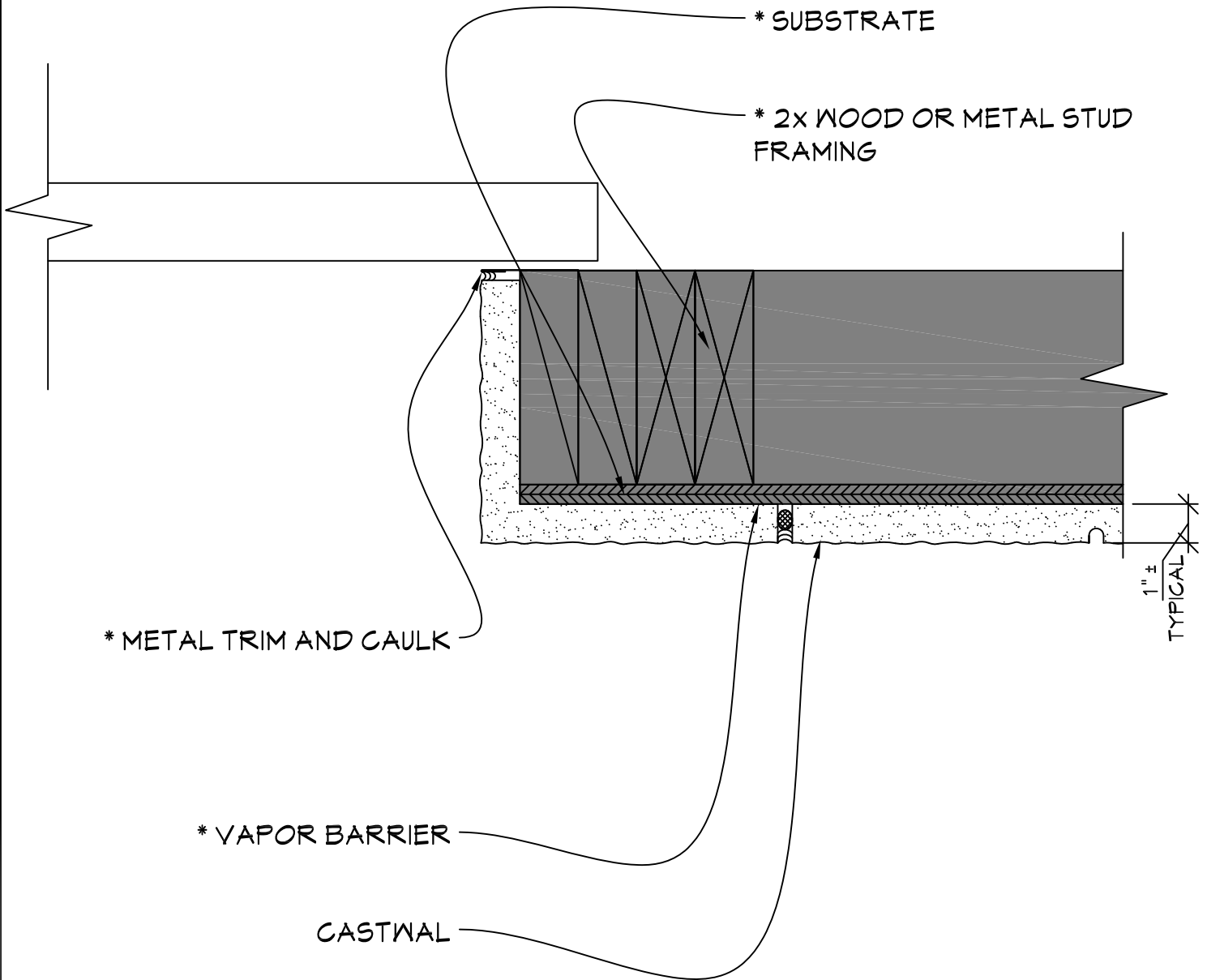
# FFS

FULLERTON  
FINISH SYSTEMS

8645 W. 21st. Street P.O. Box 609  
Sand Springs, OK. 74063  
PH (918) 246-9995

## CASTWAL

CLICK FFS LOGO TO RETURN TO MAIN PAGE



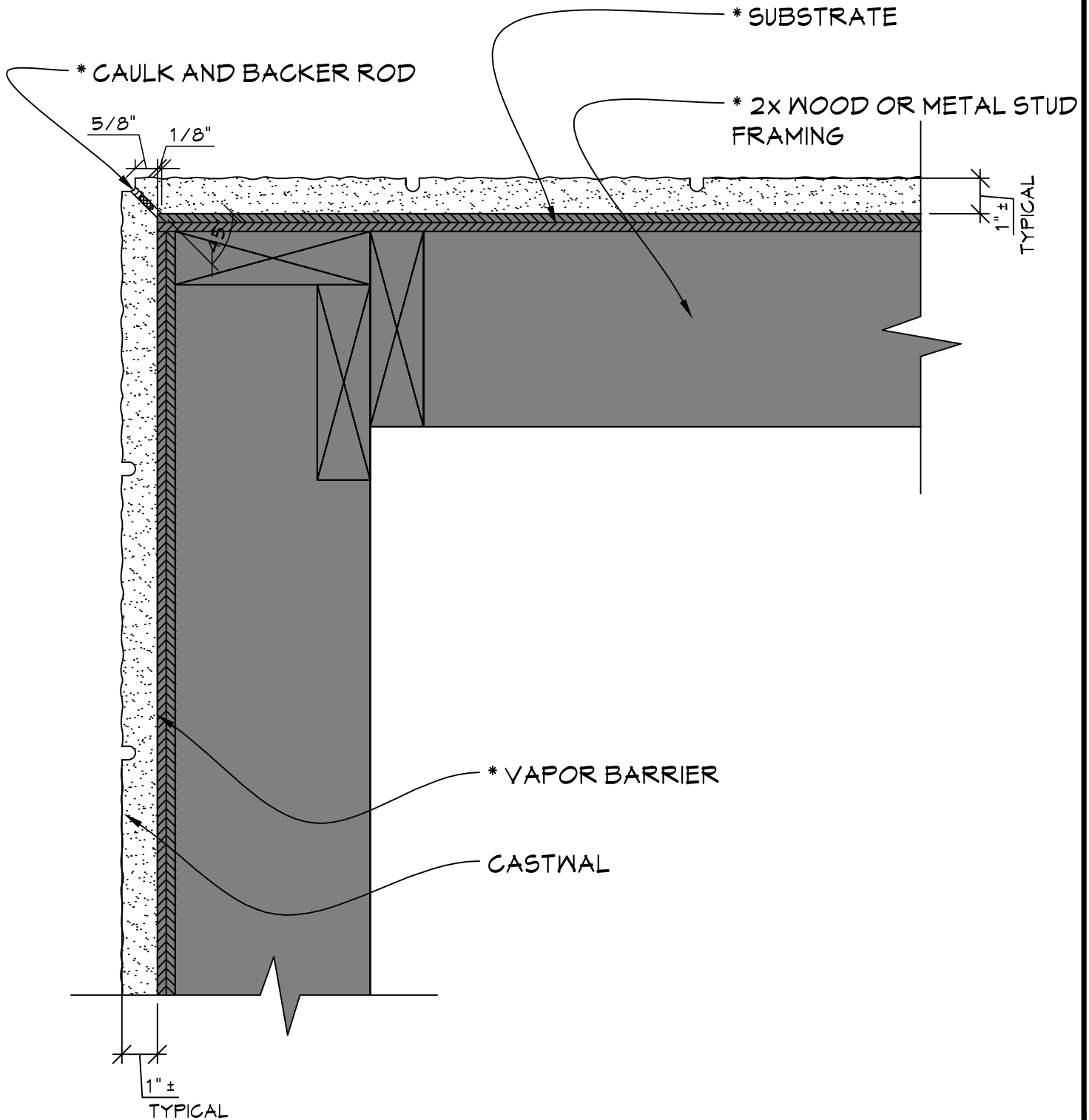
TYPICAL OVERHEAD DOOR JAMB DETAIL

SCALE: 3" = 1'-0"

NOTE:

\* = MATERIAL NOT PROVIDED BY FULLERTON FINISH SYSTEMS

# CASTWAL

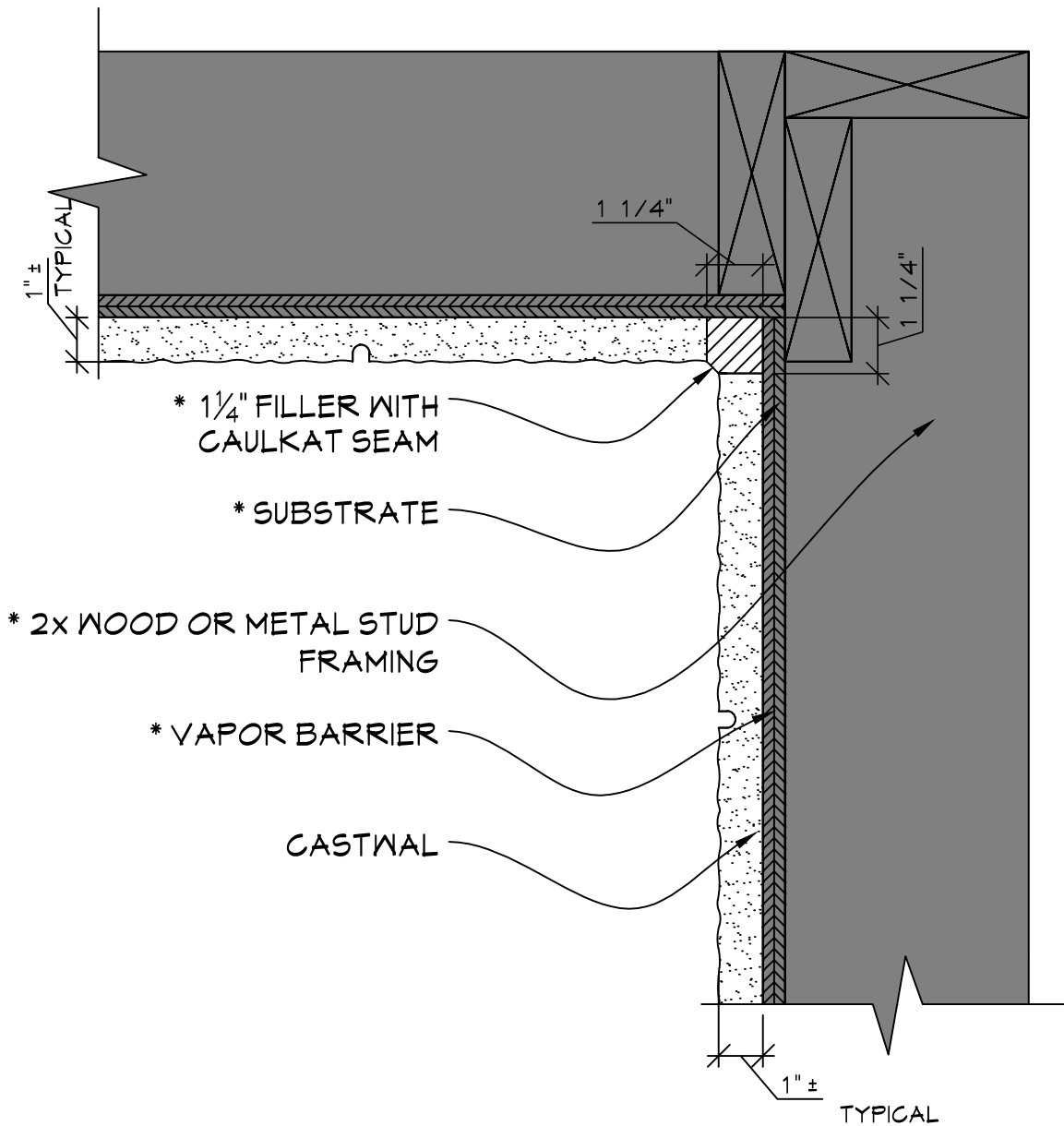


## TYPICAL OUTSIDE CORNER DETAIL

SCALE: 3" = 1'-0"

**NOTE:**

\* = MATERIAL NOT PROVIDED BY FULLERTON FINISH SYSTEMS



**TYPICAL INSIDE CORNER DETAIL**

SCALE: 3" = 1'-0"

**NOTE:**

\* = MATERIAL NOT PROVIDED BY FULLERTON FINISH SYSTEMS

# FFS

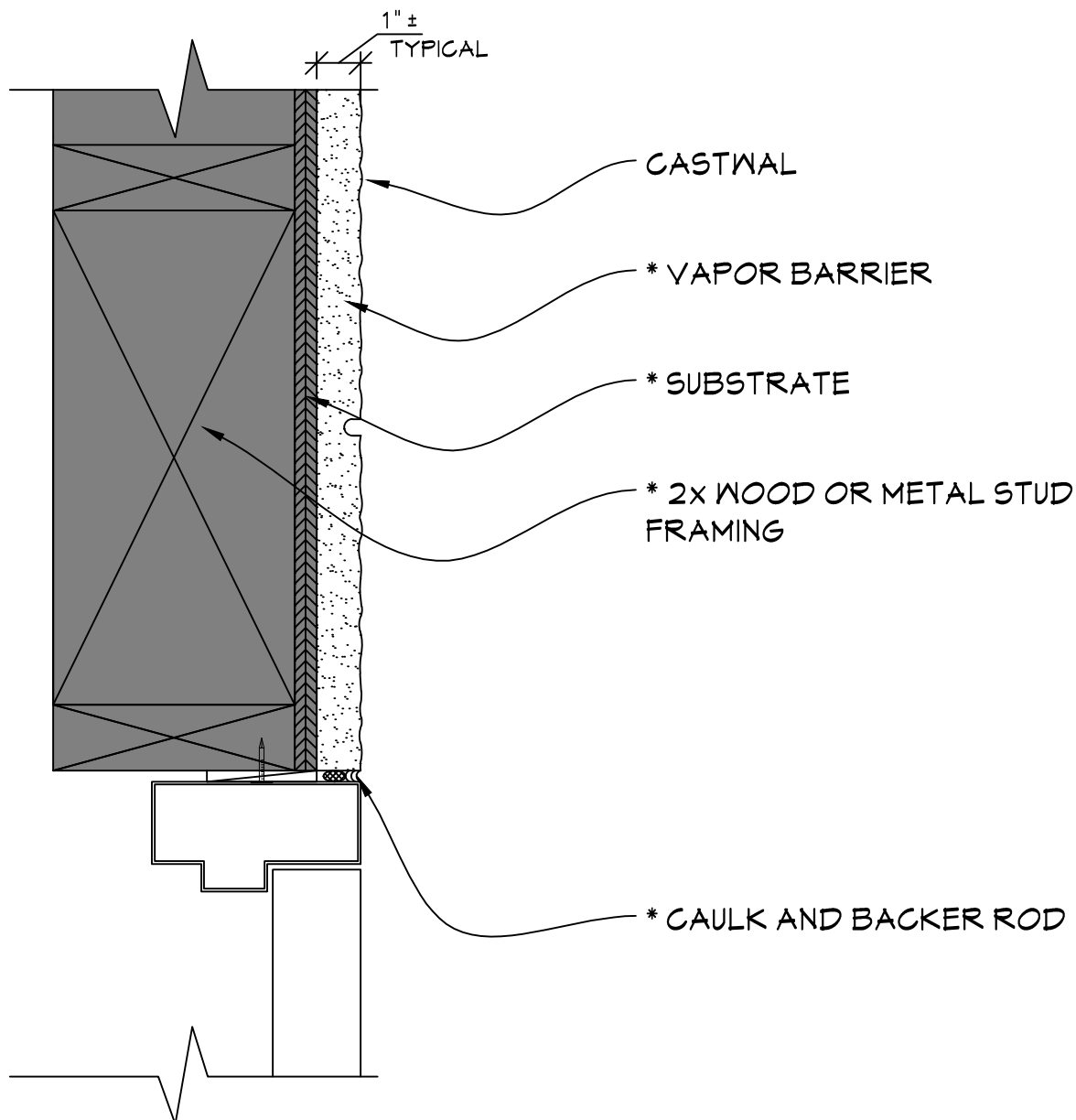
## FULLERTON

FINISH SYSTEMS

8645 W. 21st. Street P.O. Box 609  
Sand Springs, OK. 74063  
PH (918) 246-9995

CLICK FFS LOGO TO RETURN TO MAIN PAGE

# CASTWAL



## TYPICAL DOOR HEAD DETAIL

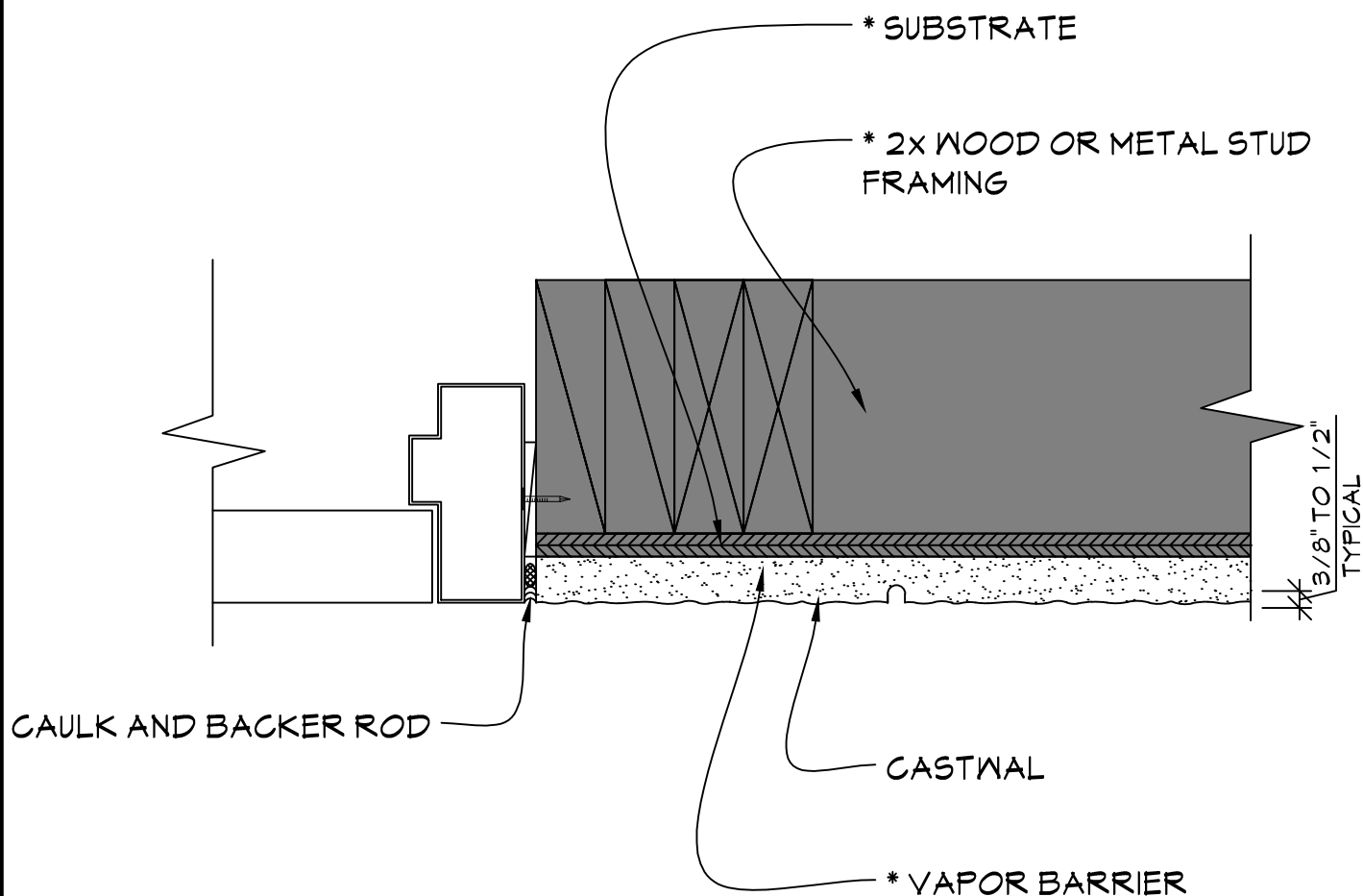
SCALE: 3" = 1'-0"

NOTE:

\* = MATERIAL NOT PROVIDED BY FULLERTON FINISH SYSTEMS



# CASTWAL

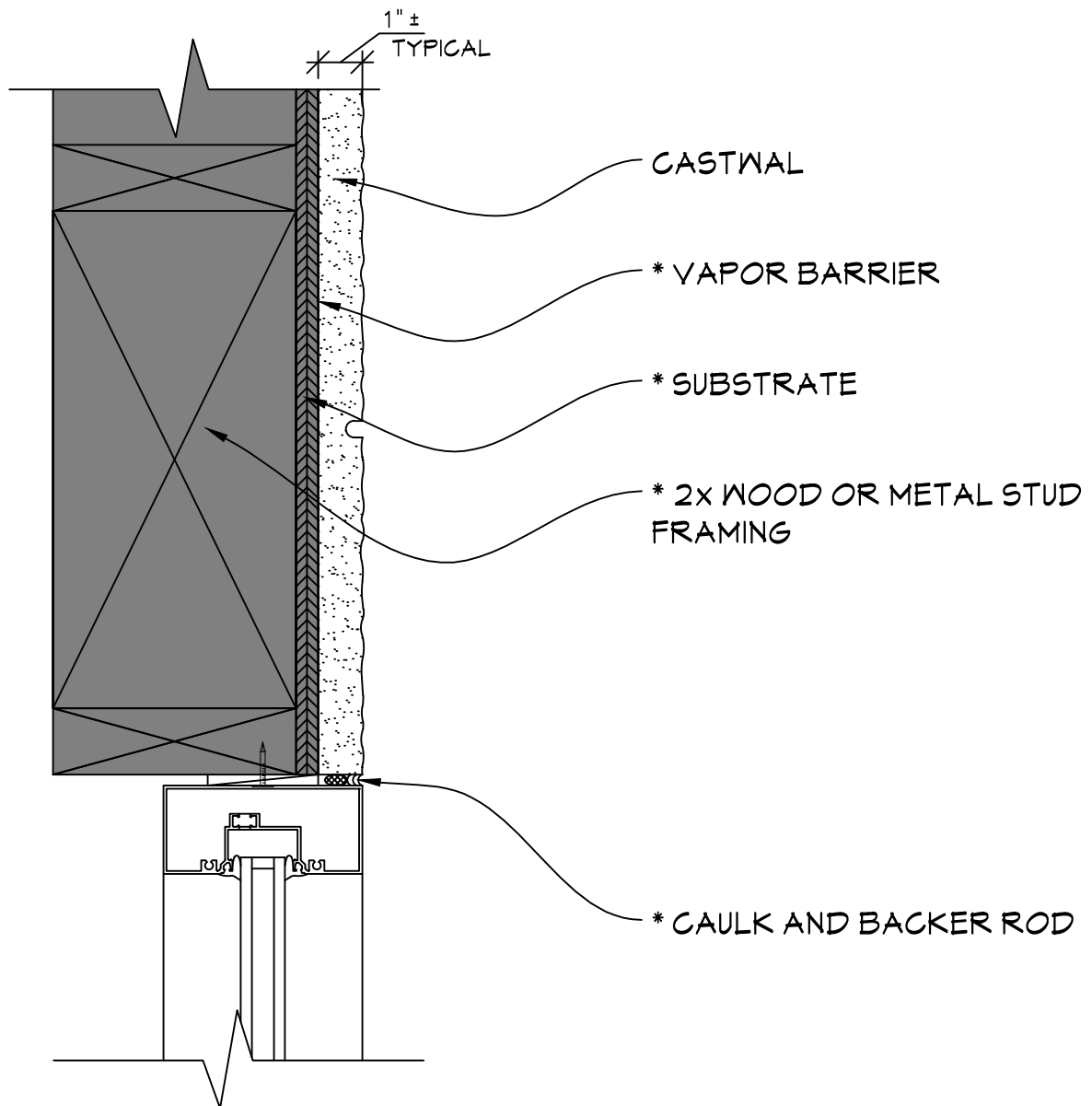


## TYPICAL DOOR JAMB DETAIL

SCALE: 3" = 1'-0"

NOTE:  
 \* = MATERIAL NOT PROVIDED BY FULLERTON FINISH SYSTEMS

# CASTWAL



## TYPICAL WINDOW HEAD DETAIL

SCALE: 3" = 1'-0"

NOTE:  
\* = MATERIAL NOT PROVIDED BY FULLERTON FINISH SYSTEMS

# FFS

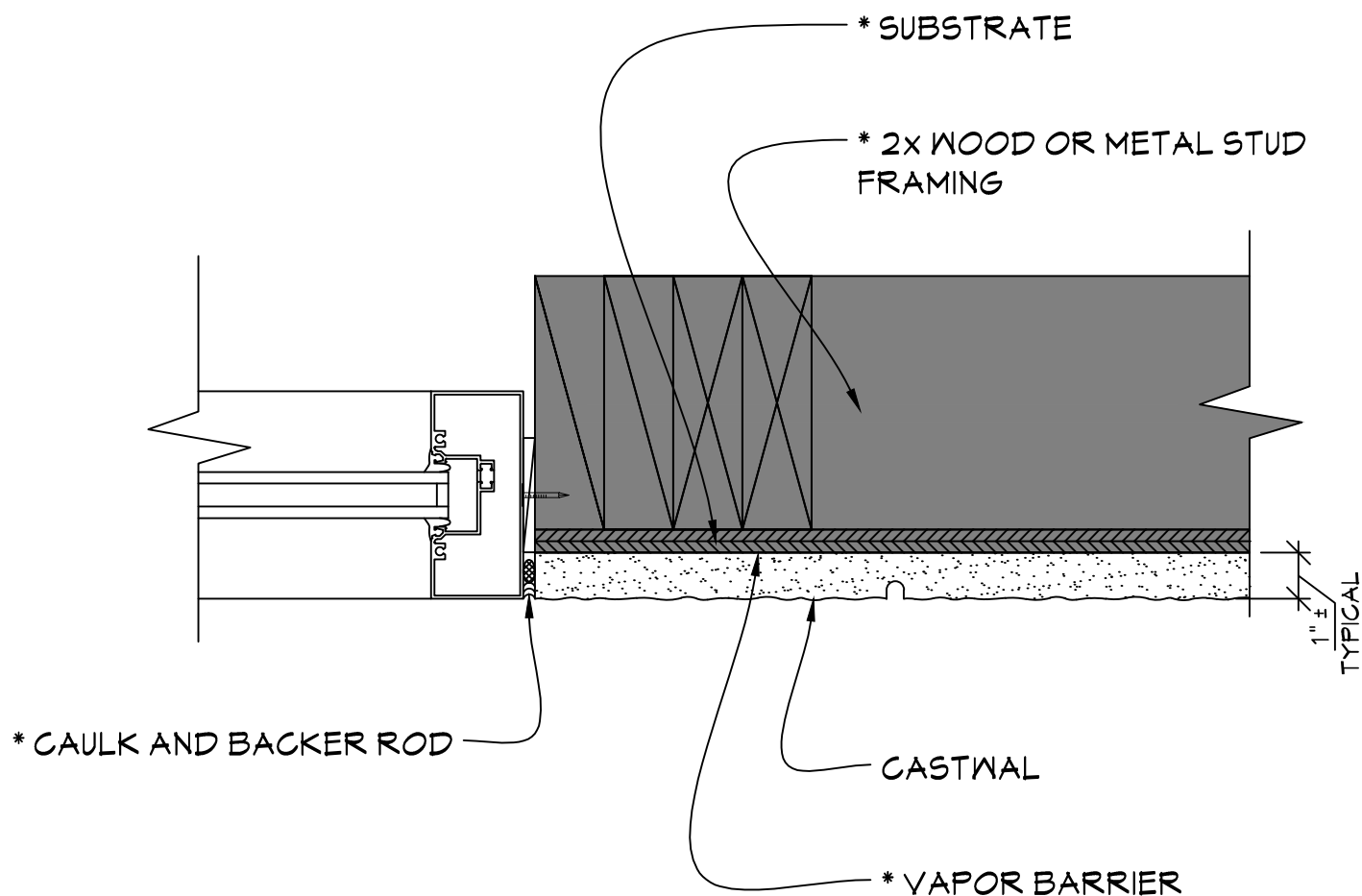
## FULLERTON

FINISH SYSTEMS

8645 W. 21st. Street P.O. Box 609  
Sand Springs, OK. 74063  
PH (918) 246-9995

CLICK FFS LOGO TO RETURN TO MAIN PAGE

# CASTWAL



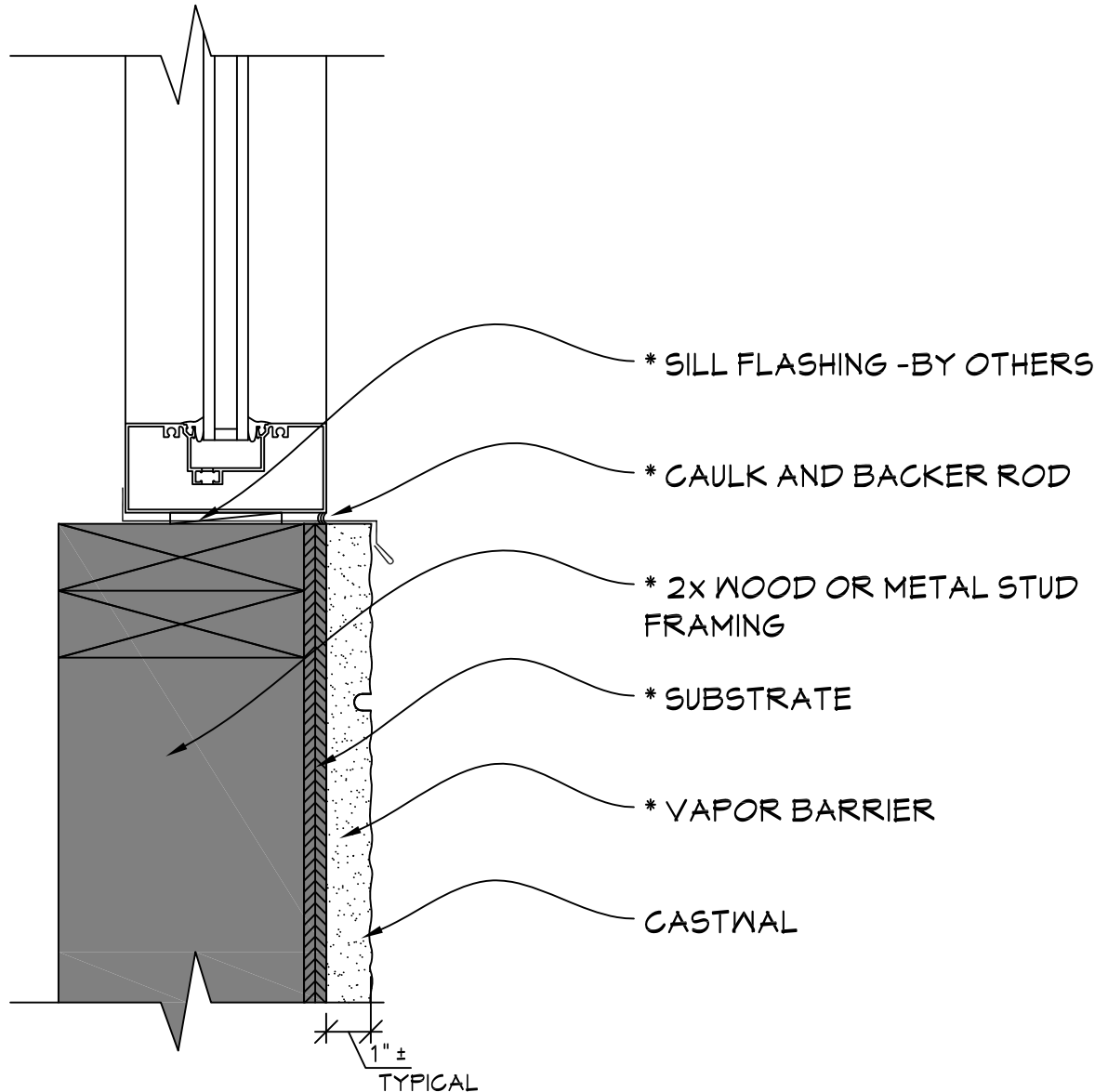
## TYPICAL WINDOW JAMB DETAIL

SCALE: 3" = 1'-0"

### NOTE:

\* = MATERIAL NOT PROVIDED BY FULLERTON FINISH SYSTEMS

# CASTWAL

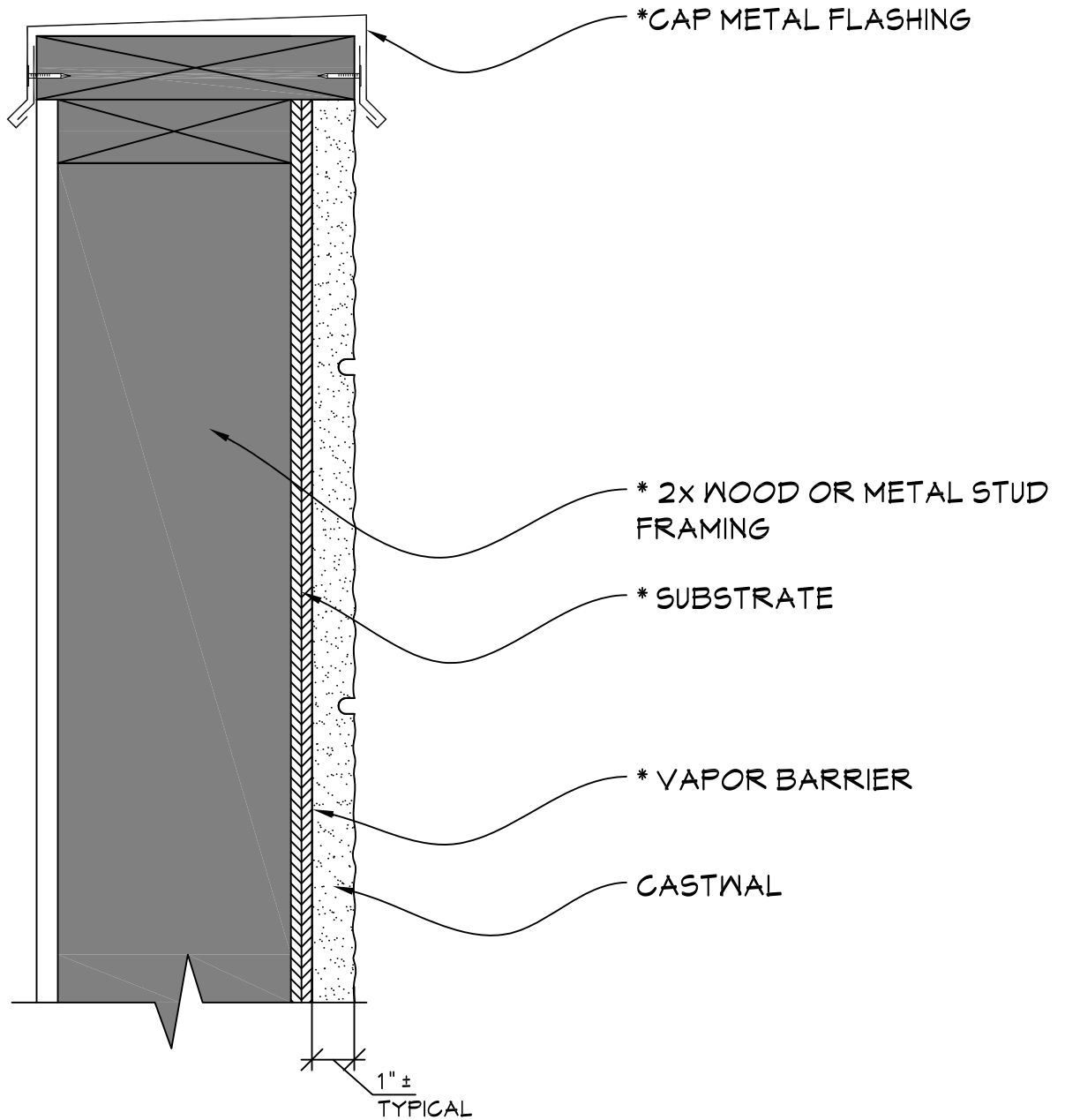


## TYPICAL WINDOW SILL DETAIL

SCALE: 3" = 1'-0"

NOTE:  
\* = MATERIAL NOT PROVIDED BY FULLERTON FINISH SYSTEMS

# CASTWAL

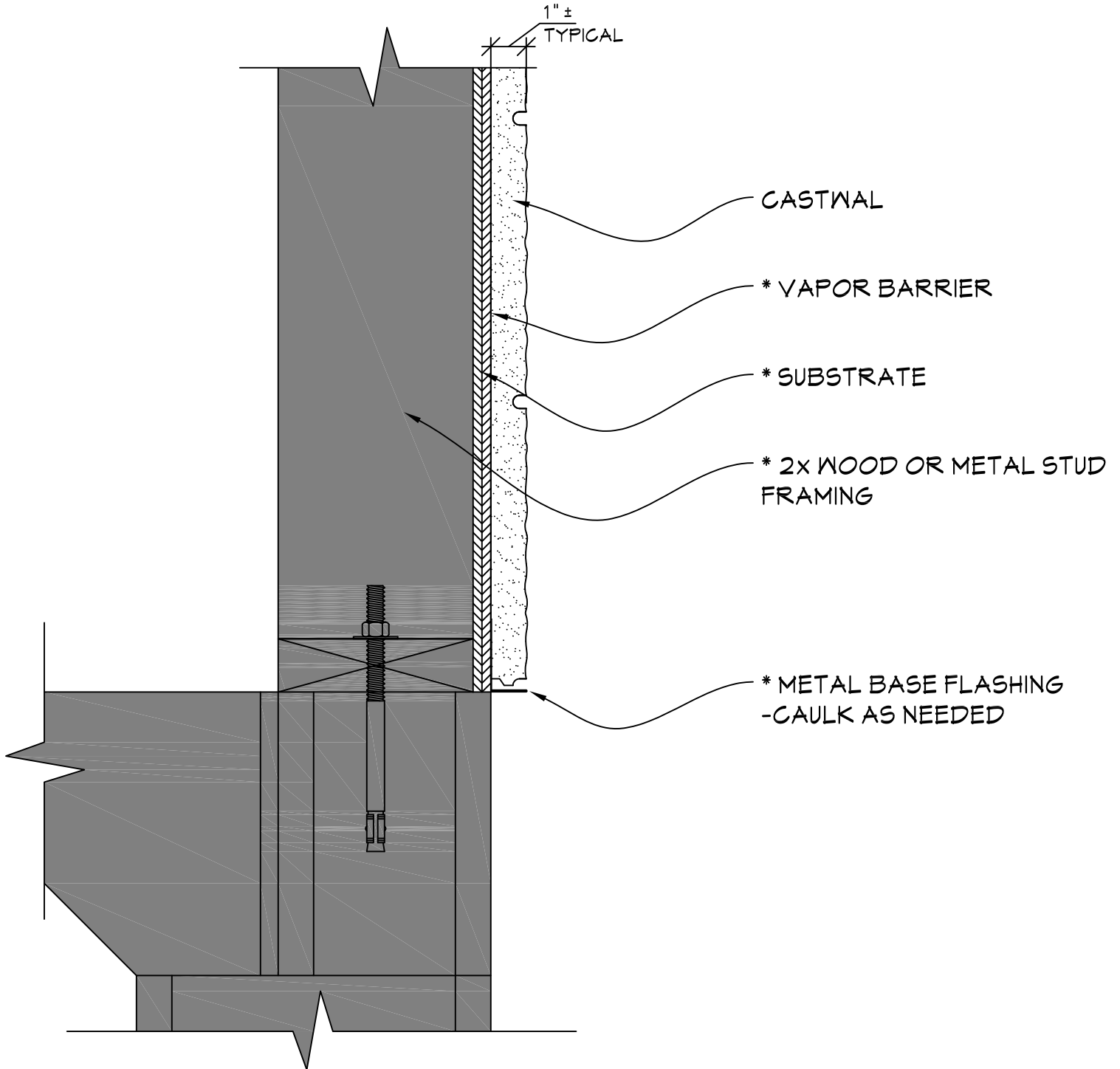


## TYPICAL PARAPET DETAIL

SCALE: 3" = 1'-0"

NOTE:  
\* = MATERIAL NOT PROVIDED BY FULLERTON FINISH SYSTEMS

# CASTWAL

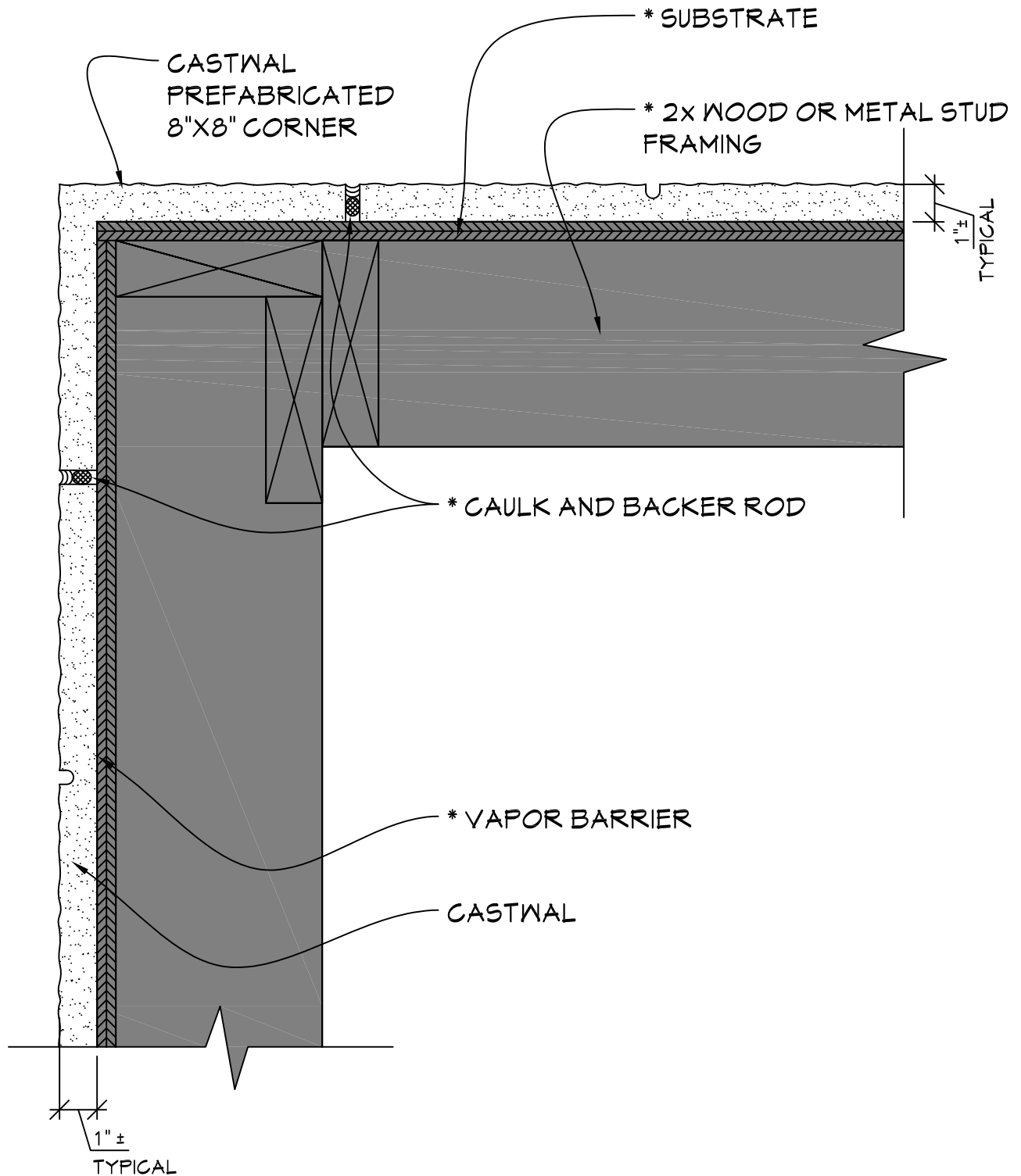


## TYPICAL BASE DETAIL

SCALE: 3" = 1'-0"

NOTE:  
\* = MATERIAL NOT PROVIDED BY FULLERTON FINISH SYSTEMS

# CASTWAL



## OPTIONAL OUTSIDE PREFAB CORNER DETAIL

SCALE: 3" = 1'-0"

NOTE:  
 \* = MATERIAL NOT PROVIDED BY FULLERTON FINISH SYSTEMS